

SWAROVSKI ELEMENTS



application MANUAL

designers' choice SINCE 1895

application MANUAL

CONTENTS

08 GENERAL INFORMATION

- 10 Application Manual
- 10 Application Online
- 11 Application Services
- 14 Advanced Solutions
- 20 General Product Information
- 25 SWAROVSKI ELEMENTS and Suitable Application Techniques

26 SOLDERING, PLATING, AND STONE SETTING

- 28 Product Overview
- 28 Machines, Tools, and Aids
- 29 Suppliers
- 30 Application
- 38 Directions for Jewelry Manufacture
- 40 Quick Assistance

42 GLUING

- 44 Product Overview
- 44 Machines, Tools, and Aids
- 47 Suppliers
- 48 Application
- 58 Overview of the Application Processes
- 59 Product-specific Application Instructions
- 65 Useful Information
- 68 Quick Assistance

70 SEALING

- 72 Product Overview
- 72 Machines, Tools, and Aids
- 74 Suppliers
- 75 Application
- 81 Other Sealing Methods
- 83 Useful Information
- 84 Quick Assistance

86 HOTFIX APPLICATION

- 88 Product Overview
- 88 Machines, Tools, and Aids
- 90 Suppliers
- 91 Application
- 99 Useful Information
- 101 Quick Assistance
- 102 Swarovski Hotfix Selector

110 SEWING, EMBROIDERY AND HAND APPLICATION

- 112 Product Overview
- 112 Machines, Tools, and Aids
- 115 Suppliers
- 116 Application
- 124 Useful Information
- 125 Quick Assistance

126 MECHANICAL APPLICATION

- 128 Product Overview
- 128 Machines, Tools, and Aids
- 132 Suppliers
- 136 Application
- 143 Useful Information
- 144 Quick Assistance

146 CARE INSTRUCTIONS

- 148 Textile Care Instructions
- 150 General Care Instructions

151 CERTIFICATES, NORMS, REGULATIONS, AND WARNING NOTICES

SWAROVSKI AND THE SWAROVSKI ELEMENTS BRAND

Swarovski is the world leader in the production of precision-cut crystals that are used in the fashion and jewelry industry, as well as in the world of lighting design, architecture, and the interior sector. The company, which has remained in family hands since its foundation in 1895, in Wattens, Austria, employs 20,000 people and is present in more than 120 countries.

SWAROVSKI ELEMENTS is the premium brand for the finest crystal elements produced by Swarovski. For over one hundred years, leading designers and producers have employed these innovative and inspiring elements in their creations. SWAROVSKI ELEMENTS are available in an incredible variety of shapes, cuts, colors, and effects, and captivate through their creative potential. The “MADE WITH SWAROVSKI ELEMENTS” label identifies design pieces that incorporate high-quality crystal elements, and serves as a certificate of authenticity for consumers around the world.

SWAROVSKI ELEMENTS represents:

INDIVIDUALITY AND CREATIVITY

SWAROVSKI ELEMENTS are the small, sparkling crystals that make all the difference in the development of unique design pieces. They set first-class creations apart from everyday designs. In addition, Swarovski is the only company to provide the possibility of customized editions

INNOVATION LEADERSHIP

SWAROVSKI ELEMENTS set new standards in both technology and design. Through intense trend research and new developments in the field of the raw materials used, their composition, and their application, new innovations of the highest quality are developed, continually inspiring and revolutionizing the industry. In line with the spring/summer and fall/winter trends, SWAROVSKI ELEMENTS launches a package of innovations twice a year, with new colors, effects, and cuts, as well as semi-finished products.

VARIETY OF PRODUCTS

SWAROVSKI ELEMENTS are available in the largest variety of shapes and cuts, sizes, colors, and effects on the market. The assortment ranges from classic gemstone cuts right up to contemporary, avant-garde cuts, and from the classically elegant crystal colors to the latest trend colors. It goes without saying that the crystal colors and surface effects are consistent throughout the entire assortment.

HIGHEST QUALITY & BRILLIANCE

Swarovski has developed the crystal cut with the highest level of brilliance: the XILION cut. XILION elements stand out because of their clearly differentiated star shape cut, which, thanks to precision workmanship and the perfect positioning of the facets, creates the ideal distribution of light and the highest level of brilliance. The unique Platinum Foiling further supports these quality characteristics because it protects the crystal during further processing (e.g. plating or soldering) thus ensuring the permanent brilliance of the crystal element.

SUSTAINABILITY

Customers selecting SWAROVSKI ELEMENTS opt for the very highest crystal standard, as well as supporting environmental protection and sustainable development. New, groundbreaking crystal compositions from Swarovski meet regulatory and safety requirements, as well as our own strict, independent standards. SWAROVSKI ELEMENTS sees itself as a dependable partner and works to constantly supply its customers with the highest quality crystal, while taking responsibility for consumers and for the environment.

An overview of the SWAROVSKI ELEMENTS product assortment can be found in the Collection Summary. The full range, along with product details, is listed in the product catalog (Collection) as well as on the Business website WWW.SWAROVSKI-ELEMENTS.COM/BUSINESS..

APPLICATION SERVICES

Thanks to their outstanding quality and with the help of specially developed application techniques, SWAROVSKI ELEMENTS can be processed easily and quickly to produce a high quality finished product. This manual contains information concerning all the usual application techniques, including photos and detailed explanations, as well as the Application Services offered by Swarovski. Through comprehensive Application Services, customers profit from the extensive experience of internal and leading international technical specialists. Each of Swarovski's regional offices is available at any time for further information. In addition, a wide range of continually updated information and application support in multimedia format can be found on the Swarovski Business website WWW.SWAROVSKI-ELEMENTS.COM/BUSINESS..

SWAROVSKI ELEMENTS



SWAROVSKI® is a registered trademark.

benefit FROM OUR EXCLUSIVE
INGREDIENT *branding program*

WWW.SWAROVSKI-ELEMENTS.COM/PARTNER

designers' choice SINCE 1895



INFORMATION ON CERTIFICATES AND COMPLIANCE OF SWAROVSKI ELEMENTS

MORE THAN 100 YEARS OF INNOVATION AND EXPERIENCE

Swarovski has been dedicated to perfection in all aspects of crystal creativity since 1895. Today, Swarovski is an inspiration to the entire design world in terms of high-quality, precision-cut crystal.

RESPECT AND RESPONSIBILITY

All Swarovski products reflect the values of the company: respect, integrity, and a sense of responsibility toward people and the environment. SWAROVSKI ELEMENTS are synonymous with the spirit of innovation not only from a design perspective but also with regard to certificates and compliance with laws governing health and safety.

OEKO-TEX® CERTIFICATE

SWAROVSKI ELEMENTS are certified according to class II of the Oeko-Tex® Certificate 100, an international quality label for harmless textiles. The class II standard for the textile industry regulates textiles that are in direct, lasting contact with human skin. The standard regulates thresholds for specific health damaging substances, and is even stricter than present laws.

EN 71/3 AND ASTM F963-03 CERTIFICATE

SWAROVSKI ELEMENTS fulfill the EN71/3 and ASTM F963-03 norms with reference to the permissible solubility of substances for children's toys.

PLATINUM FOILING AND M-FOILING FREE OF HAZARDOUS SUBSTANCES

The foilings used for SWAROVSKI ELEMENTS are compliant according to 16 CFR 1303 and do not exceed the lead limit for surface coatings.

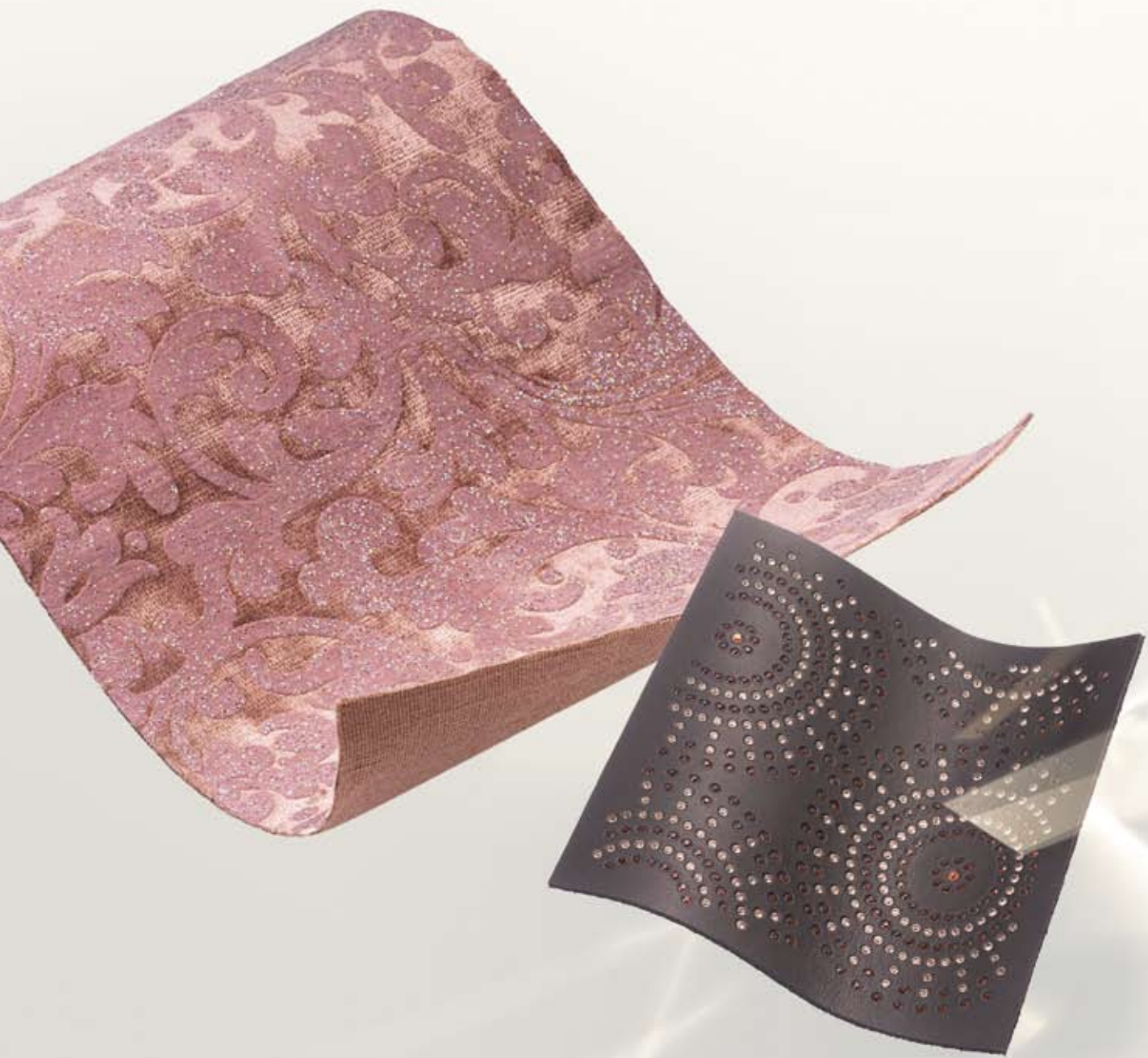
ROHS COMPLIANCE

The RoHS directive which has been in effect since July 1, 2006 regulates the use of certain hazardous substances (e.g. lead, cadmium, mercury) in connection with electrical and electronic equipment. Due to the exception granted to the glass industry for bound lead in crystal glass, the majority of our crystal range* (including effects and Crystal Pearls) can be employed in electric and electronic devices..

REACH

The Registration, Evaluation, and Authorization of Chemicals is a new EU regulation that came into force on June 1, 2007. Under this regulation, manufacturers or importers of chemicals must pass on information about chemicals that are contained in the products they provide. This information needs to be provided both to customers and to the European Chemicals Agency (ECHA). Swarovski fulfills all the requirements of REACH regulations. For further information regarding compliance and/or application recommendations, please refer to our Business website WWW.SWAROVSKI-ELEMENTS.COM/BUSINESS or to our Application Manual.

*At the time of printing, the following colors did not conform to RoHS regulations: Citrine, Dark Red Coral, Fire Opal, Garnet, Hyacinth, Light Siam, Palace Green Opal, Siam, and Sun



WWW.SWAROVSKI-ELEMENTS.COM/BUSINESS



GENERAL *information*

Swarovski offers a comprehensive range of services, tailored to customers' requirements, for the application of SWAROVSKI ELEMENTS.

APPLICATION MANUAL



This Application Manual offers extensive information on the various Application Services and Advanced Solutions provided by Swarovski. In addition, thanks to their outstanding quality and with the help of specially developed application techniques, SWAROVSKI ELEMENTS can be processed easily and quickly to produce a high-quality finished product. The processes involved are described in this manual on a step-by-step basis, with photos and illustrations.

Each application method contains detailed information on the following areas:

Products	SWAROVSKI ELEMENTS that are suitable for the application technique in question
Machines, Tools, and Aids	List of machines, tools, and aids necessary for application
Suppliers	Selection of suppliers that sell these machines, tools, and aids
Application	Detailed description of the entire application process and the product-specific procedure Furthermore, the Hotfix Selector outlines extensive application parameters for suitable product and carrier material combinations
Useful Information	Advice and tips on working with SWAROVSKI ELEMENTS
Quick Assistance	A checklist of typical application problems, along with possible causes and recommendations on avoiding them (in each chapter these are marked with a ?!)

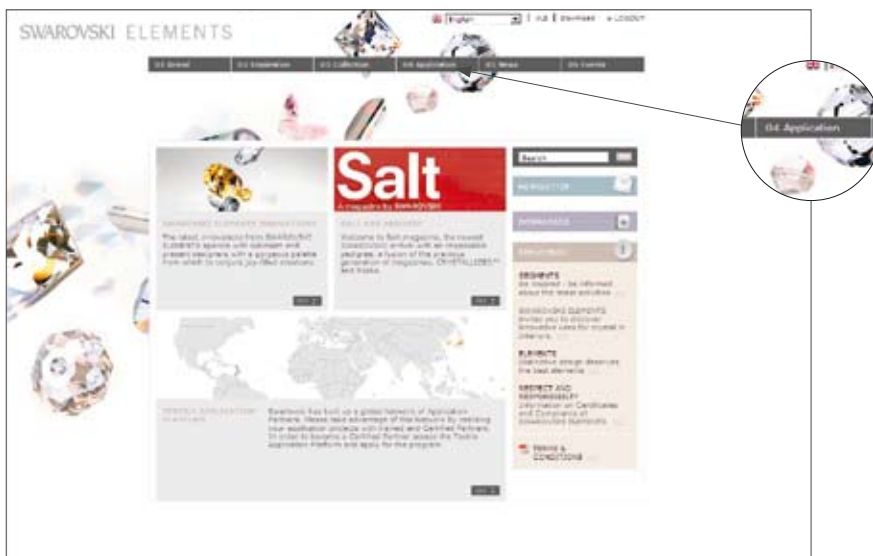
Extensive care instructions and further information on certificates, norms and regulations are featured at the end of the manual.

APPLICATION ONLINE: WWW.SWAROVSKI-ELEMENTS.COM/BUSINESS



All the information contained in this manual is regularly updated on the SWAROVSKI ELEMENTS business website (WWW.SWAROVSKI-ELEMENTS.COM/BUSINESS). In addition, application techniques are demonstrated through animations and videos. The site is an excellent way to find out about Swarovski's Application Services and application techniques.

To gain access to the restricted section of the business website, please contact your local Swarovski representative.



APPLICATION SERVICES



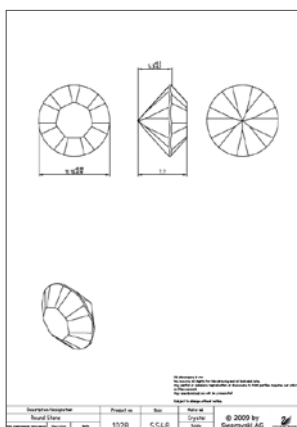
Swarovski offers a comprehensive range of services, tailored to your requirements, for applying SWAROVSKI ELEMENTS. In doing so, the company aims to meet the needs of each industry, and to jointly offer flexible and integrated solutions.

- Technical inquiry service
- Training courses
- Application partner network

Technical inquiry service

Available worldwide, the technical inquiry service can help you in the following areas:

- Product information
- Technical drawings
- Information on standards and regulations
- Care instructions
- Certificates
- Individual application tests based on customer samples
- Information on machines, tools, and aids



For further information, please contact your local Swarovski office.

Training courses

Swarovski can pass on its application expertise through training courses, which can be carried out locally in the form of demonstrations, workshops or individual production consultancies on site. According to the target group and industry, you receive an overview of the extensive application possibilities of SWAROVSKI ELEMENTS, in both theory and practice. The focus is on the efficient use of aids, the optimum choice of application techniques, and quality assurance.

For further information, please contact your local Swarovski office.



Application partner network

As a company with a global sales network and deep understanding of the market, Swarovski has comprehensive knowledge of various application companies and their services from around the world.

Based on this knowledge, Swarovski has developed a global partner network, made up of “Recommended” and “Certified” application partners. They offer a wide range of technical and product-related services, as well as tailored production solutions.

**RECOMMENDED CERTIFIED
APPLICATION CENTER**

**SWAROVSKI
ELEMENTS**

**CERTIFIED
APPLICATION CENTER**

**SWAROVSKI
ELEMENTS**

Application partners can assist you with a variety of application techniques, such as Hotfix application, sewing, embroidery, and mechanical application. In addition, many partners can carry out technically complex solutions, such as Flat Back Leather and the automated, mechanical application of Rivets. The services offered by our partners range from product and design consultancy, to prototyping and carrying out production, and make up a key component of our customer focus.

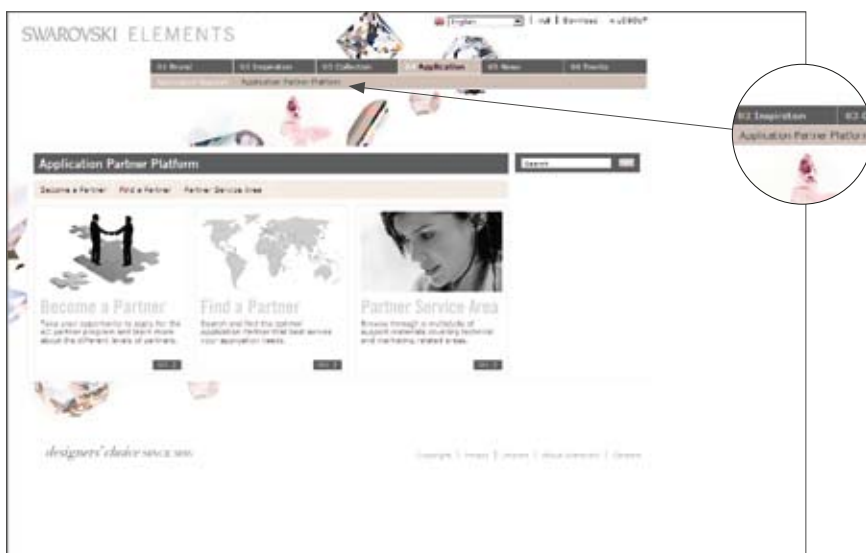
Should you require a professional partner to assist you in applying items such as Transfer Motifs onto t-shirts, Rivets onto belts, or Plastic Trimmings onto jeans, the “Application Partner Platform” or your local Swarovski office can offer guidance.

Application Partner Platform (APP)

The “Application Partner Platform” enables you to find the right application partner swiftly and easily, wherever in the world production may be taking place. Through a tailored “pitch function”, you can send out a specific, detailed application request (e.g. to apply XILION Transfers onto 500 t-shirts at a target price of €5) to select partners around the world.

The platform is made up of three core areas – “Find a Partner”, “Become a Partner”, and “Partner Service Area”:

- **Find a Partner**
Using the search function, this area enables you to locate the best Application Center for your application work. You are immediately provided with a list of application partners, which you can download and save. If you use the “pitch function” for a specific inquiry regarding an application service, you receive detailed quotes from the application partners contacted.
- **Become a Partner**
If you are interested in becoming an application partner yourself, the “Become a Partner” section contains key information on the requirements and an application form to complete. Your local Swarovski office will then contact you as soon as possible.
- **Partner Service Area**
The “Partner Service Area” provides application partners with exclusive access to specially developed, tailored information, communication materials, and “Service Tools”. Through the “Partner Service Area”, Swarovski partners are regularly kept up to date with new information and features, to simplify working with SWAROVSKI ELEMENTS and expand the application possibilities.



Access to the Application Partner Platform:

The “Application Partner Platform” is located in the restricted area of the business website:

WWW.SWAROVSKI-ELEMENTS.COM/BUSINESS. Under “Application”, you will find direct access to the “Application Partner Platform”.

For access to the restricted area of the business website, and for further information, please contact your local Swarovski office.

Swarovski classifies Advanced Solutions as innovative technical solutions that involve both specialized product and application knowledge. These may be the result of long-term internal research and development, or a fruitful partnership with an external partner. Swarovski has developed Advanced Solutions for certain areas and segments, whereby specific demands and requirements must be met. The following chapter presents a selection of application innovations and solutions available, which should be considered among the many application possibilities of SWAROVSKI ELEMENTS.

Chaton Leather

Chaton Leather is one of two innovative application solutions developed specially for the leather industry. The technique requires a considerable amount of technical know-how and is offered **exclusively by Swarovski**.

In general, smooth leather is one of the most captivating and challenging carrier materials for applying SWAROVSKI ELEMENTS. Because of the unique structure of leather, and its sensitive, treated surface, a standard Hotfix application is not recommended. Therefore, Swarovski has developed and patented a technique that allows **Diamond Transfers to be applied to smooth leather**.

Article explanation

SWAROVSKI ELEMENTS

- The Chaton Leather technique is suitable for applying Diamond Transfers of crystal sizes PP 12 and PP 17.
- The two crystal sizes can also be combined, if desired.

Colors and motif selection

- This technique can be used for standard motifs and special motifs, and offers all the standard colors and effects of the Diamond Transfer range.

Diamond Transfer motif size

- The maximum size of the Diamond Transfer motif is a Chaton Leather application on 480x197 mm.
- In general, there is no minimum size for a Diamond Transfer motif.



Geometric Chaton Leather motif on nappa lambskin

Specification of the carrier material

Leather types

- As leather is a natural product, each individual hide is unique. Leather can react differently to heat and pressure, depending on natural properties, as well as the processing and finishing methods.
- Swarovski therefore checks each individual hide before beginning the application process to ensure optimum results.
- In addition, Swarovski recommends a selection of standard leathers that are particularly suitable for applications using the Chaton Leather technique.

Size of the leather

- The maximum size of the leather is 490x207 mm.
- In general, there is no minimum size, though there may be some restrictions in individual cases.

Leather thickness

- For crystals of size PP 12, the leather should be between 0.7 and 1.0 mm thick.
- For crystals of size PP 17, the leather should be between 1.0 and 1.3 mm thick.
- If both crystal sizes are to be combined in a single motif, the leather must be 0.9 – 1.1 mm thick. These thickness recommendations should be followed to achieve optimum application results.

Care instructions

- Chaton Leather features natural leather as the carrier material. As leather can be sensitive and react differently to mechanical and chemical stresses, we recommend cleaning it with a soft cotton cloth.
- In general, mild, pH-neutral leather cleaners produced by the leather industry can also be used, though these should be tested before the first application.
- Please obtain further information from your leather supplier in order to achieve the required results.

Sample and order information

Process

- Testing and approving the customer's leather for suitability
- Developing the Chaton Leather motif required and drawing up the quotation
- Placing and producing the sample order
- Placing and producing the production order
- Sending the final cut Chaton Leathers to the customer

Tailored sample and production orders can be requested at your nearest Swarovski sales organization.

Developing the Chaton Leather motif

- Sending images and files in an accessible format (JPG, BMP, DXF), that reflect the actual size of the design and are of a good quality, is a major advantage in transforming the design into a Chaton Leather motif.
- In your design instructions, please include the motif size as well as the dimensions of the leather, respecting the final maximum dimensions of 490x207 mm.

Sending the customer leather

- To ensure the best possible use of the carrier material, please cut the leather into shape before sending it. Please add an extra 25 mm border on each side, to ensure optimum production results. (Example: if the final piece of leather is to be 100x50 mm, it must be sent at a size of 150x100 mm.)

Please note

Due to technical/production-related tolerances when working with Chaton Leather, the final design may differ slightly to the original. As such, the design or the application (in the wider sense) may be subject to slight variation in each reproduction. As these variations are not considered a defect, no warranty claims can be made against Swarovski.

Alongside the general terms and conditions, special conditions also apply to Chaton Leather, which are sent with each quotation.

Flat Back Leather

Flat Back Leather is the second innovative application solution developed specially for the leather industry. The technique is based on a great degree of technical know-how, and is offered **exclusively by Certified Application Centers**.

In general, smooth leather is one of the most captivating and challenging carrier materials for applying SWAROVSKI ELEMENTS. Because of the unique structure of leather, and its sensitive, treated surface, a standard Hotfix application is not recommended. Swarovski has therefore developed and patented a technique that enables **XILION Transfers and Pearl Transfers to be applied to smooth leather**.

Article explanation

SWAROVSKI ELEMENTS

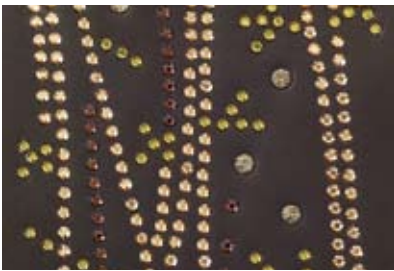
- The Flat Back Leather technique is suitable for applying XILION Transfers with crystal sizes of SS 12, 16, 20, 30, and SS 34, and Pearl Transfers of sizes SS 16 and SS 34.
- Different crystal sizes can also be combined if desired.

Colors and motif selection

- This technique can be used for standard motifs as well as special motifs, and offers all the standard colors and effects of the XILION Transfer and Pearl Transfer ranges.

Motif size

- The maximum size of the motif is 500x322 mm.
- Motifs that are larger than this can easily be joined together during the application process on the leather.
- In general, there is no minimum size for a Flat Back Leather motif.



Floral Flat Back Leather motif on nappa lambskin with additional Rivets

Specification of the carrier material

Leather types

- As leather is a natural product, each individual hide is unique. Leather can react differently to heat and pressure, depending on natural properties, as well as the processing and finishing methods.
- To ensure optimum results, your application partner will check each individual hide before beginning the application process.
- In addition, Swarovski recommends a selection of standard leathers that are particularly suitable for application using the Flat Back Leather technique.

Size of the leather

- In general, there is no maximum leather size. However, the size of the heat press (standard size: 500x400 mm), the transfer design, and the roughness of the leather can lead to restrictions. Before the start of production, a sample run should always be applied.
- There is no minimum size for the leather.

Leather thickness

- To achieve optimum results, a minimum leather thickness of 0.5 mm is recommended.
- A maximum thickness cannot generally be given, as it depends on the structure and elasticity of the leather. Before the start of production, a sample run should always be applied.

Care instructions

- Flat Back Leather features natural leather as the carrier material. As leather can be sensitive and react differently to mechanical and chemical stresses, a soft cotton cloth is recommended for cleaning.
- In general, mild, pH-neutral leather cleaners produced by the leather industry can also be used, though these should be tested before the first application.
- Please obtain further information from your leather supplier in order to achieve the required results.

Sample and order information

Certified Application Center

- Due to extensive technical requirements, Flat Back Leather is supplied exclusively by trained, Certified Application Centers. A list of partners around the world can be found on the business website, WWW.SWAROVSKI-ELEMENTS.COM/BUSINESS, in the Application Partner Platform area.
- Please contact your nearest Swarovski sales organization for more information.

Process

- Testing and approving the customer's leather for suitability (Certified Application Center)
- Developing the Flat Back Leather motif and drawing up the quotation for the exclusive application (Swarovski)
- Drawing up the quotation for the application (Certified Application Center)
- Placing and producing the sample order (customer with the Certified Application Center)
- Placing and producing the production order (customer with the Certified Application Center)
- Sending the final Flat Back Leather to the customer (Certified Application Center)

Developing the Flat Back Leather motif

- Sending images and files in an accessible format (JPG, BMP, DXF), that reflect the actual size of the design and are of a good quality, is a major advantage in implementing the design into a Flat Back Leather motif.
- In your design instructions, please include the motif size, respecting the final maximum dimensions of 500x322 mm.

Please note

The sample and production order is placed directly with the Certified Application Center. In line with this, all order and delivery conditions, as well as conditions of business, are agreed directly with the Application Partner. Swarovski will be happy to assist you throughout the order process.

Due to technical/production-related tolerances when working with Flat Back Leather, the final design may differ slightly to the original. As such, the design or the application (in the wider sense) may be subject to slight variation in each reproduction. No warranty claims can be made against Swarovski in this respect.

Flocking service with SWAROVSKI ELEMENTS

Flocking with SWAROVSKI ELEMENTS is an innovative application technique, which offers a wide range of options for large-format application on high-quality textile carrier materials. This application process is offered **exclusively by Swarovski**, and is based on a standard textile finishing technique, combined with comprehensive printing and application expertise.

Article explanation

- Flocking with SWAROVSKI ELEMENTS has been developed specially for the decorative interior sector. Curtains, wall coverings and decorative accessories, to name just a few, can be transformed into an interior high point using this process.
- A wide selection of different flock colors, along with combination possibilities involving crystals in Crystal Aurore Boreale and Jet Hematite, offer the spectrum necessary to create first-class effects.
- Crystal integration: high or low density
- Color combinations: a flock color can be combined with a crystal color
- Pattern repeat: vertically, 64 cm or 92 cm; horizontally, 35 cm to a maximum of 140 cm
- Minimum width of an individual flock line: 5 mm
- Minimum distance between individual lines: 2 mm



Crystal in Jet Hematite



Crystal in Crystal Aurore Boreale

Specification of the carrier material

Before finishing, fabrics should not be treated with silicone, Teflon® or any other surface waterproofing. For industrial production, very light or wide-meshed fabrics require an additional support material (e.g. water soluble) on the rear side.

Care instructions

In general, fabrics flocked with SWAROVSKI ELEMENTS should be treated as follows:

- Hand wash
- Lint brush
- Dry cleaning (P) and professional wet cleaning (W)

Sample and order information

- Tailored sample and production orders can be requested at your nearest Swarovski sales organization.
- Please ensure that all dimensions (e.g. pattern repeat) are included with the request. Pictures or drawings, preferably in black and white, must be the exact same size as the design required. Alternatively, high-quality scans in TIF or DXF format can be provided. High-quality files must be supplied to ensure a swift, accurate process.
- Upon receipt of your request you will be provided with a quotation, detailing the number of items, the fixed costs for the pattern and cylinder, and the price per meter for the crystal density (high or low). Having received your confirmation, the order is given to produce the hand-made samples (80x80 cm for each design) on the materials provided.
- When producing the hand-made samples, it is important that no less than 2 meters of the material for each design are provided. As every industrial production process requires a certain start-up period to reach the required finish quality, it is important to bear in mind that around 1–2 meters of the material provided will be regarded as scrap.
- The minimum order quantity for industrial production is 35 meters. The delivery time for an average production process (around 300 meters) can in special cases take up to six weeks. Materials flocked with SWAROVSKI ELEMENTS are rolled up and wrapped in protective film before being delivered.

Please note

Due to technical/production-related tolerances when applying flock and crystals onto fabric, the final design may differ slightly to the original and prints with regard to the outline. As such, the design or the application (in the wider sense) may be subject to slight variation in each reproduction. As these variations are not considered a defect, no warranty claims can be made against Swarovski.

Special production processes are offered to all customers, provided they are feasible and our general terms of business are applied.

GENERAL PRODUCT INFORMATION

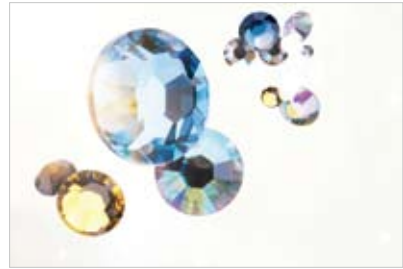
This list offers an overview of the SWAROVSKI ELEMENTS that are suitable for the application methods described. Product categories/ descriptions are based on the 2010 Collection.



Round Stones



Flat Backs No Hotfix



Flat Backs Hotfix



Sew-on Stones



Fancy Stones & Settings



Beads



Crystal Pearls



Pendants



Self-adhesive Elements



Transfers



Synthetics Hotfix



Crystal Yarn



Plastic Trimmings



Buttons, Fasteners & Zippers



Metal Trimmings



Crystal Mesh

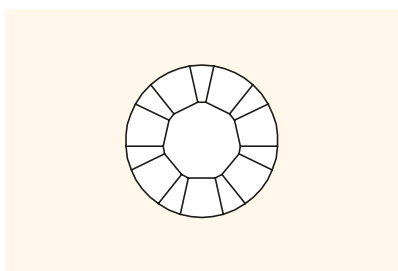


Cupchains & Findings

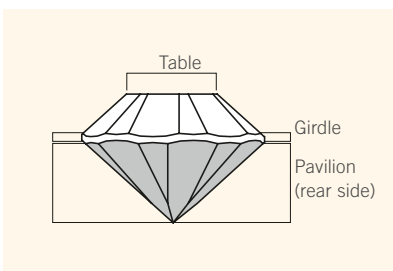


Knobs, Handles & Co

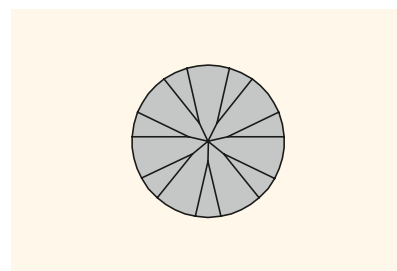
Crystal specifications



View from above (table)



Side view



View from below (pavilion)

Foiling

Foiling is the mirror coating on the back of jewelry stones that increases their brilliance. Since the introduction of XILION in 2004, Swarovski has offered its exclusive Platinum Foiling, which offers a previously unobtainable level of brilliance and enables crystals to be adapted to a variety of setting colors. In addition, products are also available with an aluminum reflector, and without foiling.



Platinum foiling (F)

A silver reflector, coated with a newly developed platinum-colored protective layer of the highest quality.



Aluminum foiling (M)

An aluminum reflector, which is technically a vapor coating.



Unfoiled (U)

Effects

Special surface or translucence effects are created through the vapor coating of the crystal surface (depending on the type of vaporization used). These can be applied to both clear crystal and colors (“Open to See Colors & Effects”). Special color and effect cards for individual product groups are located at the start of each section in the Collection. A list of all Swarovski effects follows, along with an explanation of the special vapor coating types.

Surface effects

(Vapor coating of the exposed side of the crystal)



<i>Effect code</i>	<i>Name</i>
AB	Aurore Boreale
CAL	Comet Argent Light
COP	Copper
DOR	Dorado
GSHA	Golden Shadow
HEM	Hematite (only on Jet)
METBL	Metallic Blue
METSI	Metallic Silver
MLGLD	Metallic Light Gold
MOL	Moonlight
NUT	Nut (only on Jet)
REDM	Red Magma
SAT	Satin
SSHA	Silver Shade
TRA	Transmission

Translucence effects

(Vapor coating of the rear side, effect appears through transparent crystal)



<i>Effect code</i>	<i>Name</i>
BBL	Bermuda Blue
HEL	Heliotrope
MBL	Meridian Blue
SAG	Sage
SAH	Sahara
TAB	Tabac
VL	Vitrail Light
VM	Vitrail Medium
VOL	Volcano

Special vapor coating types



V
The effect is applied in an inverted manner. The surface effect is employed like a translucence effect (e.g. CALV = Comet Argent Light on the rear side), or vice-versa (e.g. VMV = Vitrail Medium on the exposed side).



Z
The crystal is only partially vapor coated (e.g. HELZ)



B
Especially for cubes, three surfaces are coated (e.g. ABB)



2x
Both sides of the crystal are coated (e.g. AB2)

Special surface effects

Through the special chemical and mechanical treatment of the crystal surface, Swarovski can create unique surface effects.

<i>Effect code</i>	<i>Name</i>			
MAT	Matt Finish	MAT	FRO	COS
FRO	Frosted			
COS	Cosmojet			

The Matt Finish effect is produced by chemically matting the entire crystal surface. Through the chemical treatment of the crystal, small variations in dimensions cannot be ruled out after matting. Through the mechanical matting of the crystal surface, the Frosted effect can be produced. For technical reasons, this is only possible for Flat Back Roses. The blackening of individual facets creates the Cosmojet effect.

Sizes

Stones are measured in various units, according to their shape.

PP, SS

Pearl Plate (PP), Sieve Size or Stone Size (SS) for round crystals.



mm

Metric figures in millimeters for crystal components and geometric forms.

•	PP 1 (SS 000) 0.80–0.90 mm	•	PP 21 (SS 10) 2.70–2.80 mm	•	SS 25 5.44–5.61 mm	•	SS 45 9.85–10.19 mm
•	PP 2 (SS 00) 0.90–1.00 mm	•	PP 22 (SS 10) 2.80–2.90 mm	•	SS 26 5.61–5.78 mm		
•	PP 3 (SS 0) 1.00–1.10 mm	•	PP 23 (SS 11) 2.90–3.00 mm	•	SS 27 5.78–5.96 mm	•	SS 46 10.19–10.54 mm
•	PP 4 (SS 1) 1.10–1.20 mm	•	PP 24 (SS 12) 3.00–3.20 mm	•	SS 28 5.96–6.14 mm		
•	PP 5 (SS 2) 1.20–1.30 mm	•	PP 25 (SS 13) 3.20–3.30 mm	•	SS 29 6.14–6.32 mm	•	SS 47 10.54–10.91 mm
•	PP 6 (SS 2) 1.30–1.35 mm	•	PP 26 (SS 13) 3.30–3.40 mm	•	SS 30 6.32–6.50 mm		
•	PP 7 (SS 3) 1.35–1.40 mm	•	PP 27 (SS 14) 3.40–3.50 mm	•	SS 31 6.50–6.68 mm	•	SS 48 10.91–11.30 mm
•	PP 8 (SS 3) 1.40–1.50 mm	•	PP 28 (SS 14) 3.50–3.60 mm	•	SS 32 6.68–6.87 mm		
•	PP 9 (SS 4) 1.50–1.60 mm	•	PP 29 (SS 15) 3.60–3.70 mm	•	SS 33 6.87–7.07 mm	•	SS 49 11.30–11.72 mm
•	PP 10 (SS 4) 1.60–1.70 mm	•	PP 30 (SS 15) 3.70–3.80 mm	•	SS 34 7.07–7.27 mm		
•	PP 11 (SS 5) 1.70–1.80 mm	•	PP 31 (SS 16) 3.80–4.00 mm	•	SS 35 7.27–7.48 mm	•	SS 50 11.72–11.97 mm
•	PP 12 (SS 5) 1.80–1.90 mm	•	PP 32 (SS 17) 4.00–4.10 mm	•	SS 36 7.48–7.70 mm		
•	PP 13 (SS 6) 1.90–2.00 mm	•	PP 33 (SS 17) 4.10–4.20 mm	•	SS 37 7.70–7.93 mm	•	SS 55 12.97–13.22 mm
•	PP 14 (SS 6) 2.00–2.10 mm	•	SS 18 4.20–4.40 mm	•	SS 38 7.93–8.16 mm		
•	PP 15 (SS 7) 2.10–2.20 mm	•	SS 19 4.40–4.60 mm	•	SS 39 8.16–8.41 mm	•	SS 60 14.22–14.47 mm
•	PP 16 (SS 7) 2.20–2.30 mm	•	SS 20 4.60–4.80 mm	•	SS 40 8.41–8.67 mm		
•	PP 17 (SS 8) 2.30–2.40 mm	•	SS 21 4.80–4.90 mm	•	SS 41 8.67–8.95 mm	•	SS 65 15.47–15.72 mm
•	PP 18 (SS 8) 2.40–2.50 mm	•	SS 22 4.90–5.10 mm	•	SS 42 8.95–9.23 mm		
•	PP 19 (SS 9) 2.50–2.60 mm	•	SS 23 5.10–5.27 mm	•	SS 43 9.23–9.53 mm	•	SS 70 16.72–16.97 mm
•	PP 20 (SS 9) 2.60–2.70 mm	•	SS 24 5.27–5.44 mm	•	SS 44 9.53–9.85 mm		
						•	SS 75 17.97–18.22 mm

	Soldering	Plating	Setting	Gluing	Sealing	Hotfix Application	Sewing	Embroidery	Hand application	Mechanical Application
Round Stones		✓	✓	✓	✓					
Flat Backs No Hotfix			✓	✓	✓					
Flat Backs Hotfix	XILION Rose					✓				
	Creation Stones					✓				
	Creation Stones Plus					✓				
	Ringed Roses					✓				
	Cabochon Round					✓				
Sew-on Stones							✓	✓ ¹	✓	
Fancy Stones & Settings	Fancy Stones		✓		✓					
	Settings	✓	✓				✓		✓	
Beads							✓		✓	
Crystal Pearls				✓			✓		✓	
Pendants							✓		✓	
Self-adhesive Elements				✓						
Transfers	XILION Transfers					✓				
	Creation Transfers					✓				
	Creation Transfers Plus					✓				
	Pearl Transfers					✓				
	Diamond Transfers					✓				
	Metallic Transfers					✓				
	Mezzo Transfers					✓				
	Crystaltex Motives Transfers					✓				
	Transfers No Hotfix				✓					
Synthetics Hotfix	Crystal Fabric			✓	✓	✓				
	Crystal Rocks			✓	✓	✓				
	Crystal Transfabric			✓	✓	✓				
	Crystaltex			✓	✓	✓	✓ ²			
Crystal Yarn						✓	✓	✓		
Plastic Trimmings	Basic Bandings			✓	✓		✓	✓ ³	✓	
	Fishnet Bandings			✓	✓		✓		✓	
	Decorative Bandings			✓	✓		✓		✓	
	Plastic Components			✓	✓		✓		✓	
Buttons, Fasteners & Zippers	Crystal Buttons						✓		✓	
	Buttons with Plastic Shank						✓		✓	
	Snap Fasteners & Decorative Buttons									✓
	Jeans Buttons									✓
	Buttons with Metal Shank						✓		✓	
	Magnet Fasteners						✓			✓
	Zippers						✓			
Metal Trimmings	Chaton Bandings			✓	✓		✓		✓	
	Flat Back Bandings			✓			✓		✓	
	Rivets									✓
	Roses & Chaton Montées						✓		✓	
	Crystal Pearl Rivets									✓
	Rose Pins									✓
Crystal Mesh				✓	✓	✓	✓			
Cupchains & Findings	✓	✓			✓		✓		✓	
Knobs, Handles & Co				✓						

¹ Art. 3129 P288

² Not suitable for Crystaltex Chaton Bandings

³ Art. 50002, 50003, and 50004 (single row)